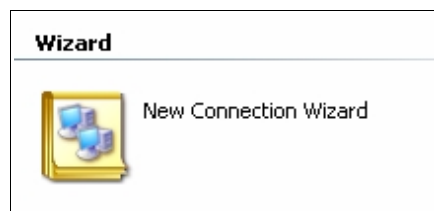
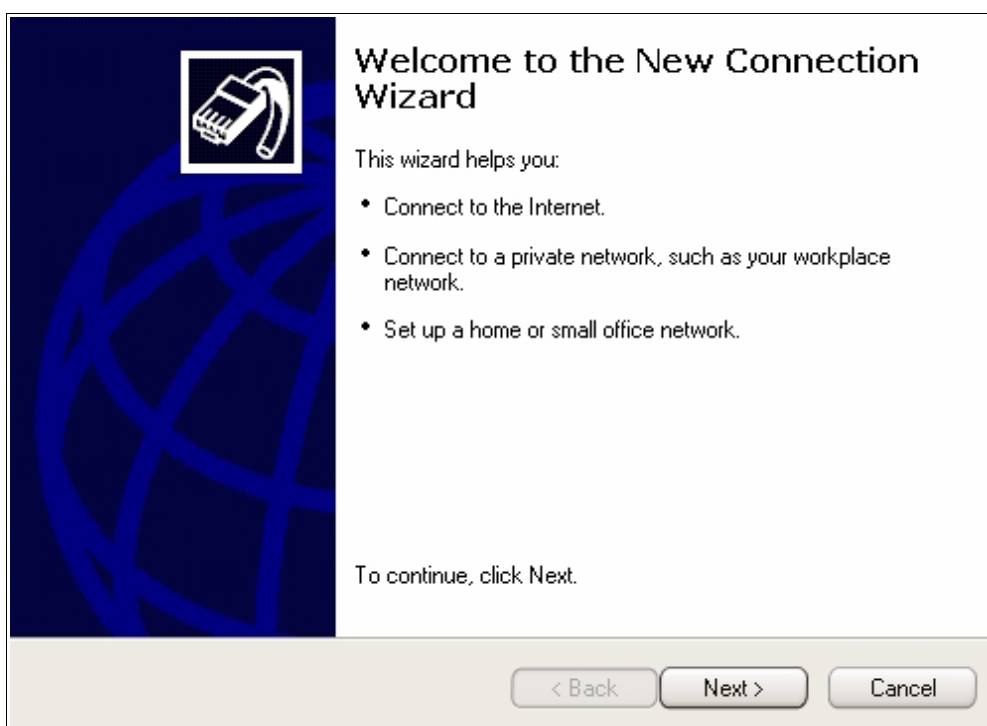


Podešavanje *broadband* dial-up konekcije za Windows XP

Podešavanje se započinje pokretanjem *New Connection Wizard*-a iz *Network Connections*-a (nalazi se u *Control Panel*-u).




Nakon pokretanja *wizard*-a, dobijate uvodni ekran. Da bi započeli podešavanje dial-up konekcije, kliknite na dugme *Next*.



Odaberite opciju *Connect to the Internet* i kliknite na dugme *Next*.

Network Connection Type
What do you want to do?




- Connect to the Internet**
Connect to the Internet so you can browse the Web and read email.
- Connect to the network at my workplace**
Connect to a business network (using dial-up or VPN) so you can work from home, a field office, or another location.
- Set up a home or small office network**
Connect to an existing home or small office network or set up a new one.
- Set up an advanced connection**
Connect directly to another computer using your serial, parallel, or infrared port, or set up this computer so that other computers can connect to it.

< Back Next > Cancel

Odaberite opciju *Setup my connection manually* i kliknite na dugme *Next*.

Getting Ready
The wizard is preparing to set up your Internet connection.




How do you want to connect to the Internet?

- Choose from a list of Internet service providers (ISPs)**
- Set up my connection manually**
For a dial-up connection, you will need your account name, password, and a phone number for your ISP. For a broadband account, you won't need a phone number.
- Use the CD I got from an ISP**

< Back Next > Cancel

Odaberite opciju *Connect using broadband connection that requires a user name and password* i kliknite na dugme *Next*.

Internet Connection 

How do you want to connect to the Internet?


Connect using a dial-up modem
This type of connection uses a modem and a regular or ISDN phone line.

Connect using a broadband connection that requires a user name and password
This is a high-speed connection using either a DSL or cable modem. Your ISP may refer to this type of connection as PPPoE.

Connect using a broadband connection that is always on
This is a high-speed connection using either a cable modem, DSL or LAN connection. It is always active, and doesn't require you to sign in.

< Back Next > Cancel

U polje *ISP Name* upisite naziv konekcije. Napomena: ovo je tekst koji će se pojaviti ispod ikonice ove konekcije.

Connection Name 

What is the name of the service that provides your Internet connection?


Type the name of your ISP in the following box.

ISP Name

The name you type here will be the name of the connection you are creating.

< Back Next > Cancel

Upisite vaše korisničko ime i šifru u odgovarajuća polja i kliknite na dugme *Next*.

Internet Account Information 

You will need an account name and password to sign in to your Internet account.

Type an ISP account name and password, then write down this information and store it in a safe place. (If you have forgotten an existing account name or password, contact your ISP.)

User name:

Password:

Confirm password:

Use this account name and password when anyone connects to the Internet from this computer

Make this the default Internet connection

Ukoliko želite da se nova konekcija automatski pojavi i na Vasem *Desktop*-u, obeležite opciju *Add a shortcut to this connection to my desktop*. Klikom na dugme *Finish* završavate podešavanje *broadband* konekcije za ADSL.